

# DAUS - 864S

DAUS - 4 COLOUR LED 75W



- **Type:** Footlight
- **Source:** 4 colour LED 75W
- **Optics:** Asymmetric

Footlight

## Create colourful upstage and downstage lighting!

Equally at home in entertainment, exhibition and retail environments, Dalis 864S Footlight is a new 75W colour variation of the original Dalis 862 tuneable white footlight, designed for the creation of colourful upstage or downstage lighting. Featuring a 4-colour mixing system, it incorporates 24 patented asymmetric reflectors arranged in a double row, independently controlled. The Footlight batten is inconspicuous from the audience viewpoint to ensure it does not impinge on the stage layout. All controls and connections are located under the unit to maintain clean sight lines. Each unit also integrates four discreet red and blue 'mark' LEDs. They can be used as position markers or cue lights for the performers on stage, and also as safety indicators to mark the edge of the stage.

### Features

- **2 red and blue coloured position lights:** individual control of each light acting as a signal and marking safely the edge of the stage without disturbing the audience
- **16-bit control of each colour:** precision dimming on every colour
- **Linear dimming curve:** no colour fading during dimming
- **Adjustable response time:** choice of fast or slow dimming for tungsten-like simulation - adjustment by DMX protocol
- **Strobe:** independent control of speed and duration
- **Ethernet-DMX node:** data IN through RJ45 connector; data OUT through DMX for daisy chaining
- **Universal data control:** compatible with DMX, RDM, Art-Net, sACN protocols
- **Remote setup:** all parameters can be adjusted by RDM protocol
- **Control of up to 2 groups:** precision lighting by separating the unit into 2 sections to target defined areas on stage
- **Dimming parameters:** choice of square or linear dimming curves
- **Adjustable feet:** can be installed directly on the floor; simple retractable foot mechanism to aid floor focusing

### Optical

- **Double row arrangement optical system:** bottom row for downstage and top row for upstage lighting with independent control of light intensity
- **Exclusive patented optical system:** 24 micro optical asymmetric reflectors spreading the light evenly with very wide aperture (90°)
- **High efficiency:** massive light output, small power consumption
- **Long life:** outstanding operational lifetime expectation, no need to replace lamps, low maintenance
- **High transmissive coated protective glass window:** ensures optimal light transmission
- **Electronic dimmer:** dimming without clipping or cut-out at low intensity levels; high quality smoothing

### Construction

- **Made in Europe:** control over all aspects of quality
- **PSU:** built-in electronic flicker-free power supply for easy, plug-and-play installation
- **Power connectors:** neutriK® powerCON TRUE1 TOP IN and OUT connectors for daisy chaining; delayed power out switching against inrush current
- **Perfect integration on stage:** compact size - all controls and connections are under the unit to maintain clean sight lines
- **Fanless system:** convection cooling- perfect for sound sensitive applications - less maintenance required
- **Electronic thermal management system:** ensures maximum performance of the system without any risk of overheating

Picture:862S

DSEN362\_864S - 13/09/2021

Robert Juliat reserves the right to change or alter any of the items detailed on this page, to increase or improve manufacturing techniques without prior notice.

Robert Juliat S.A.S., 32 rue de Beaumont, 60530 Fresnoy-en-Thelle - France  
Telephone : +33 (0)3 44 26 51 89 - fax : +33 (0)3 44 26 90 79 - info@robertjuliat.fr  
www.robertjuliat.com



ROBERT JULIAT

- **Lamp type:** LED - 4 colours
- **Life:** 40000 hours (LM70)

Colours	Power *	Lumen output*	Colour temperature*	CRI* (min)
Red				
Green				
Royal blue				
Warm white			2200K	80

(\*) manufacturer's data

## Optics

### Characteristics

- **Type:** Asymmetric
- **Horizontal spread:** °
- **Vertical spread:** 90°

## Installation and photometrics

## Remote control

- **Data protocol:** USITT DMX512-A  
RDM / Art-Net / sACN

- **Data IN connector:** 5 pins XLR mâle + etherCON RJ45
- **Data OUT connector** 5 pins XLR femelle



### • DMX chart:

#### Mode 1 (73 channels)

Dimmer @16b  
Up: 2groups RGBW @16b  
Dwn: 2groups RGBW @16b  
Strobe: duration+speed  
Response time  
Control mode  
Position light: blue+red+dim

#### Mode 2 (28 channels)

Up: Dim+RGBW @16b  
Dwn: Dim+CRGBW @16b  
Strobe: duration+speed  
Response time  
Control mode  
Position light: blue+red+dim

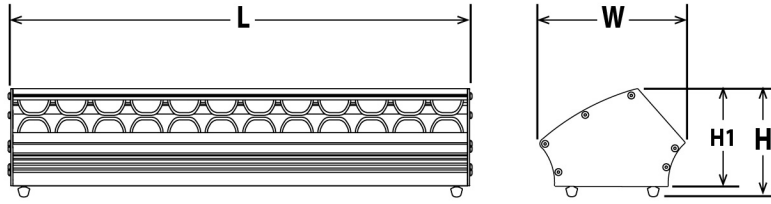
#### Mode 3 (18 channels)

Up: Dim+RGBW @8b  
Dwn: Dim+RGBW @8b  
Strobe: duration+speed  
Response time  
Control mode  
Position light: blue+red+dim

#### Mode 4 (88 channels)

Up1: Dim+RGBW @16b  
Up2: Dim+RGBW @16b  
Dwn1: Dim+RGBW @16b  
Dwn1: Dim+RGBW @16b

## Dimensions and weight



**Weight:** 4.8 kg (10.6 lbs)

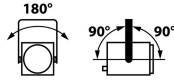
Height	Length	Width	Yoke	Tilt
H= 117 mm (4.6 in) H1= 105 mm (4.1 in) H2= 137 mm (5.4 in)	L= 505 mm (19.9 in)	W= 155 mm (6.1 in)		TU= 10° TD= 10°

## Shipping

- **Weight :** 5.4 kg (11.9 lbs)
- **Volume :** .03 m<sup>3</sup> (.95 ft<sup>3</sup>)

## Installation

- **Minimum distance to illuminated surface:** 0.2 m ( 0.7 ft )
- **Operating position:**



## Construction

- **Housing:** Steel sheet - Aluminium
- **Colour:** Black
- **Cooling:** Convection cooling
- **Maximum ambient temperature (Ta):** 40°C (104°F)
- **Maximum case temperature (Tc):** 70°C (158°F)
- **Total heat dissipation:** 259 BTU/h
- **Ingress Protection (IP) rating:** IP20

## Electrical compatibility

- 220/230 V - 50 Hz
- 245 V - 50 Hz
- 110/120 V - 60 Hz
- 208 V - 60 Hz
- 220/230 V - 60 Hz
- 100 V - 50 Hz
- 100 V - 60 Hz
- Selector: automatic detection

## Power input



- **Type:** Neutrik powerCON TRUE1 TOP (connector included)

## Power consumption

Voltage	Frequency	Current	Power	Power factor
230 V	50 Hz	0.35 A	76 W	0.98
120 V	60 Hz	0.66 A	78 W	0.99
100 V	60 Hz	0.8 A	79 W	1

## Power Supply Unit

- **PSU:** Internal - Electronic PSU - Flicker free with PFC
- **Control:** Local / DMX
- **Protection:** -
- **Power thru:** Neutrik powerCON TRUE1 TOP - Maximum of 30 units (230 V) / 15 units (120 V)

## Approvals



## Warranty

- **Fixture: 3 years**  
See General Sales Condition on website

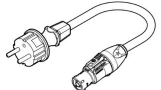

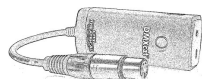
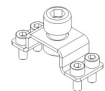
## Model

**864S**

4 colour LED 75W Footlight - 864S Dalis

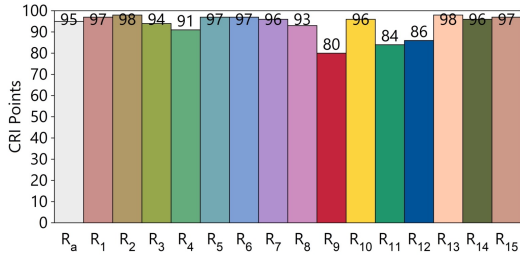
## Options

## Accessories

<b>CAL03</b>	3 meter power cable ( 3G1,5 HO7RNF) with Neutrik PowerCon© True1 and CEE 7/7 (2P+T NF/SCHUKO) connectors - Poids: 0.55 Kg	
<b>CAL05</b>	Combined Neutrik PowerCon© True1 / DMX (5 pins) patch cable - length: 1m	
<b>DMXcat</b>	Bluetooth DMX/RDM Multifunction test tool - City Theatrical DMXcat®	
<b>OmegaD</b>	2x omega brackets for M10 (with screws)	

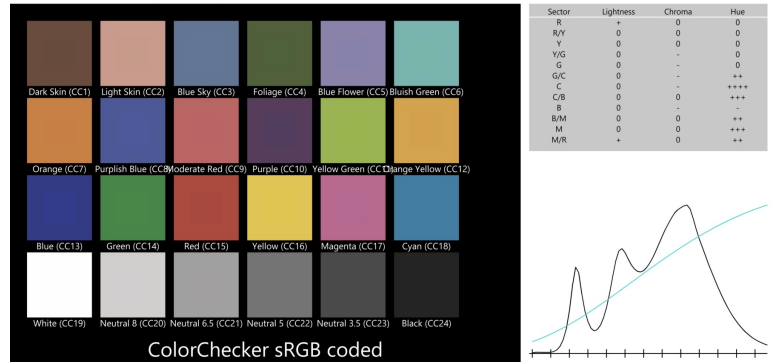
CCT	DeltaUV	CRI Ra	CRI R9	CQS Qa	TM30-18 Rf	TM30-18 Rg	TLCI
3 150K	-0.0010	95	80	94	93	105	86

CRI - CIE Colour Rendering Index

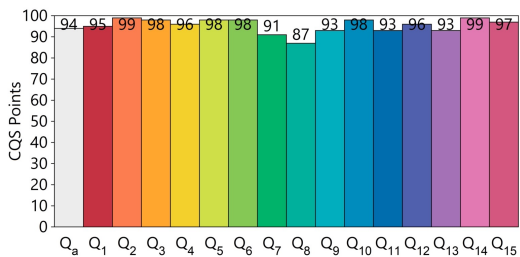


TLCI - Television Lighting Consistency Index

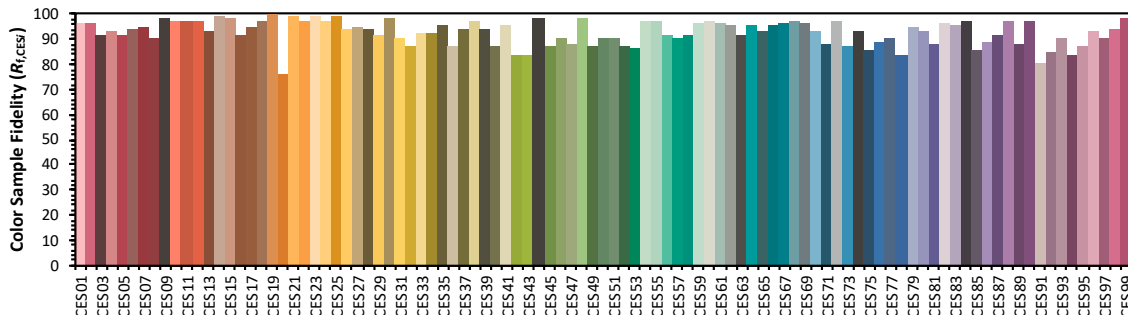
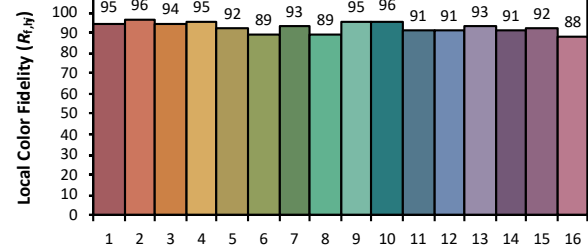
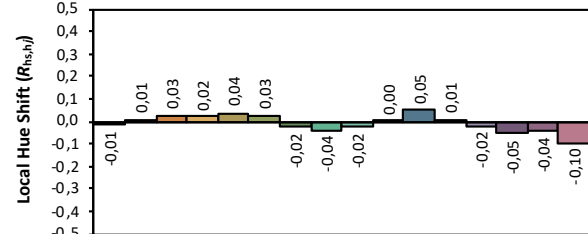
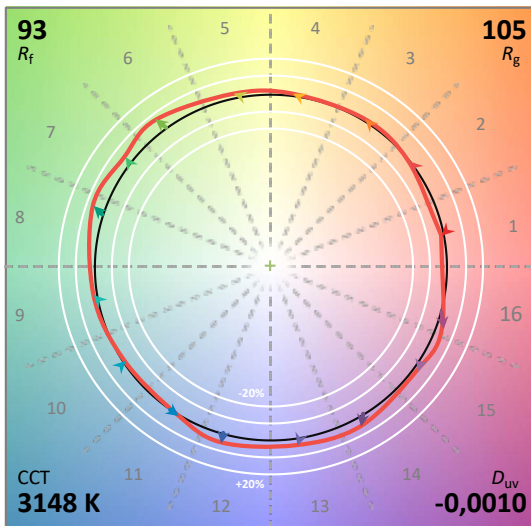
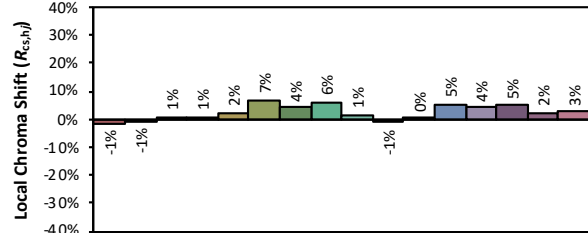
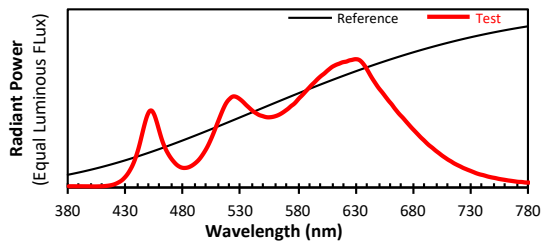
Test : CCT = P3148 (-0.2)  
 TLCI-2012 : 86 (P3148)



CQS - NIST Colour Quality Scale

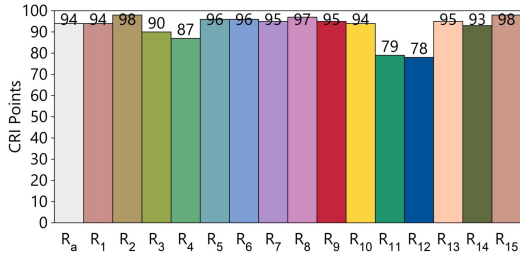


ANSI/IES TM-30-18 Colour Rendition Report



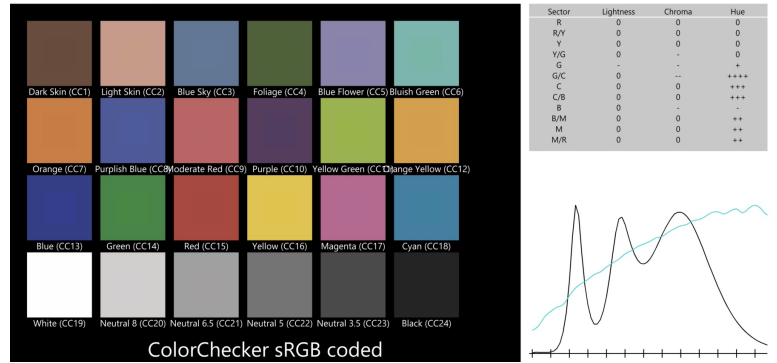
CCT	DeltaUV	CRI Ra	CRI R9	CQS Qa	TM30-18 Rf	TM30-18 Rg	TLCI
3 906K	-0.0021	94	95	94	92	106	85

CRI - CIE Colour Rendering Index

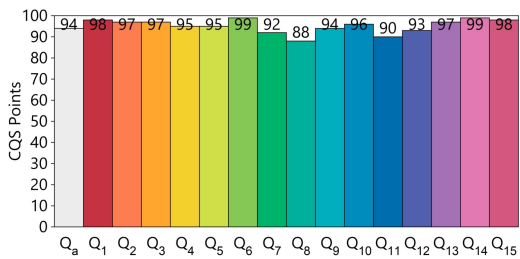


TLCI - Television Lighting Consistency Index

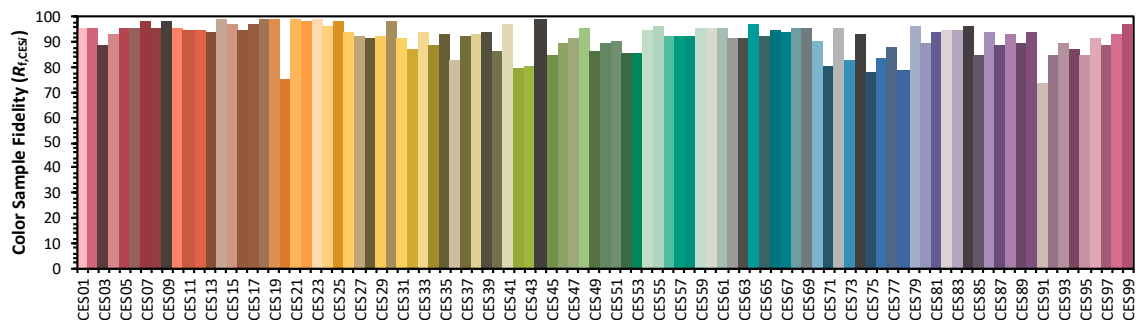
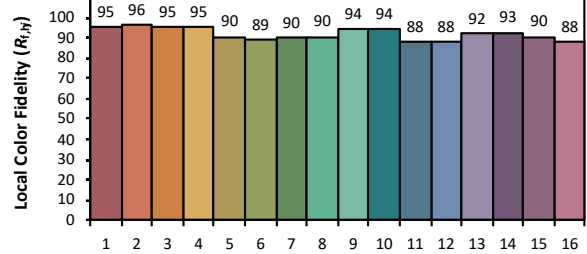
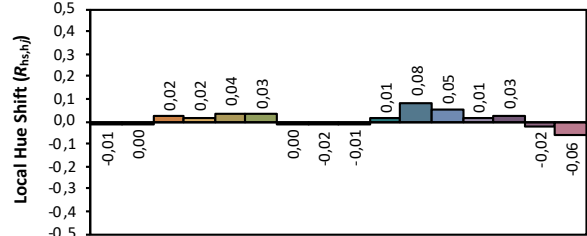
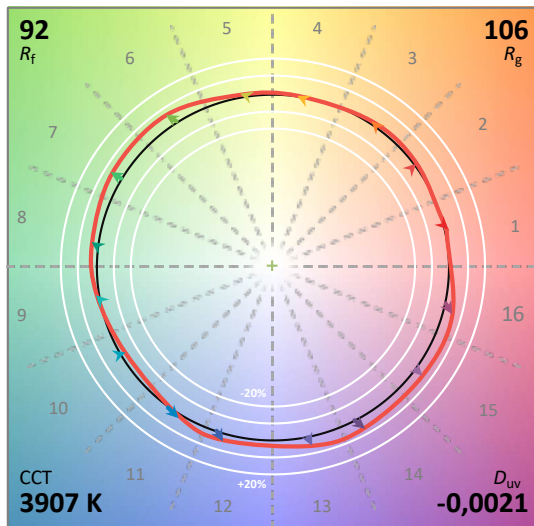
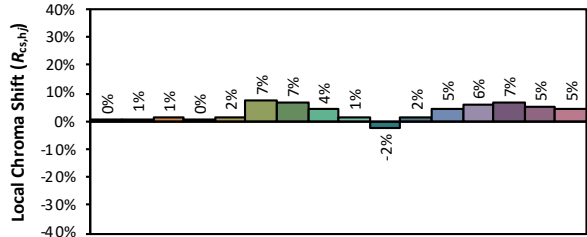
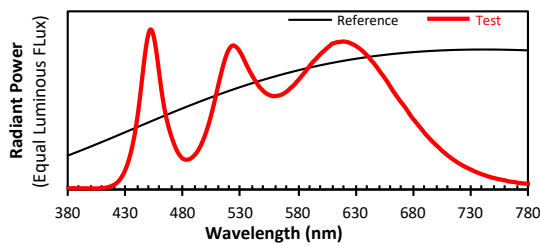
Direct spectrum input : CCT = M3907 (-0.4)  
 TLCI-2012 : 85 (M3907)



CQS - NIST Colour Quality Scale



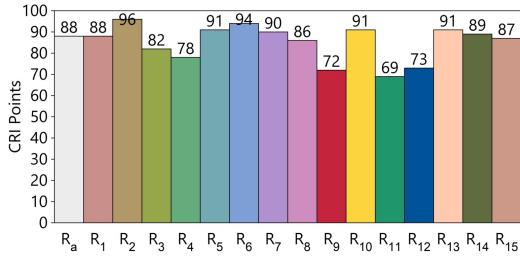
ANSI/IES TM-30-18 Colour Rendition Report



Colours are for visual orientation purposes only. Created with the IES TM-30-18 Calculator Version 2.00

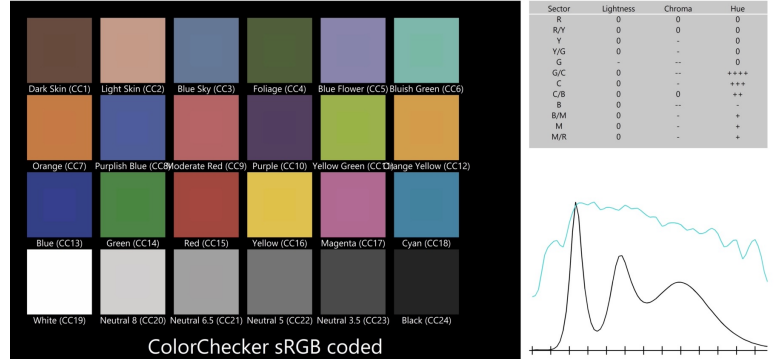
CCT	DeltaUV	CRI Ra	CRI R9	CQS Qa	TM30-18 Rf	TM30-18 Rg	TLCI
5 870K	-0.0034	88	72	92	88	109	86

CRI - CIE Colour Rendering Index

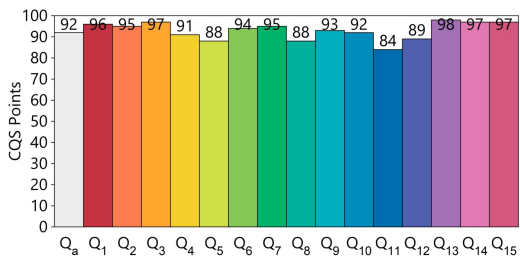


TLCI - Television Lighting Consistency Index

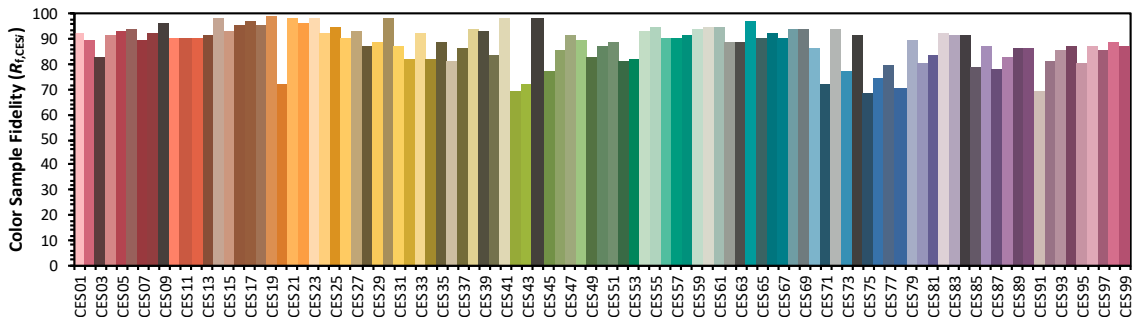
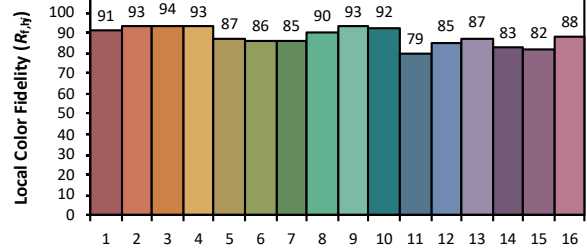
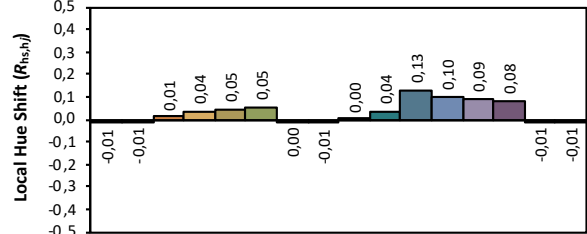
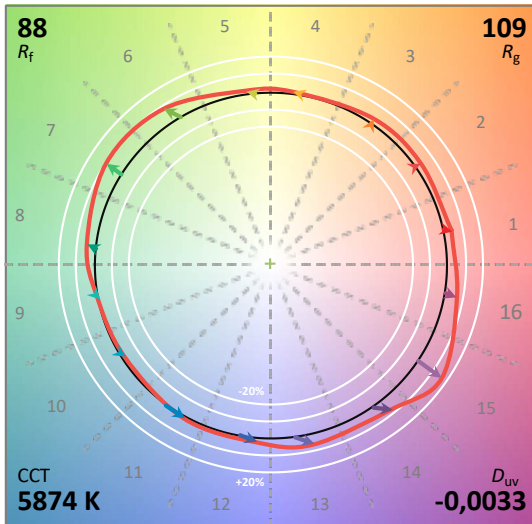
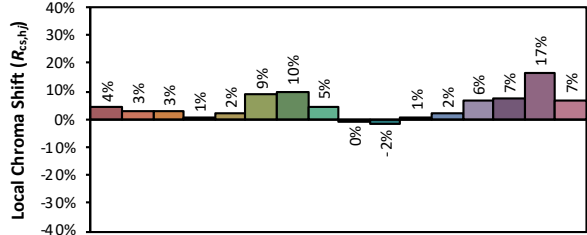
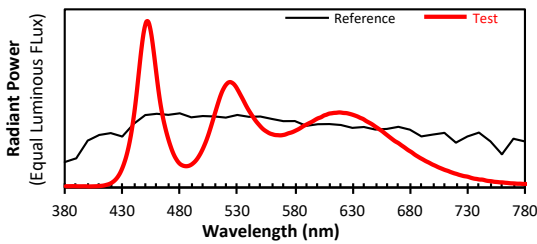
Test : CCT = D5873 (-1.2)  
 TLCI-2012 : 86 (D5873)



CQS - NIST Colour Quality Scale



ANSI/IES TM-30-18 Colour Rendition Report



Colours are for visual orientation purposes only. Created with the IES TM-30-18 Calculator Version 2.00